

BERNINA MODEL COMPARISON CHART

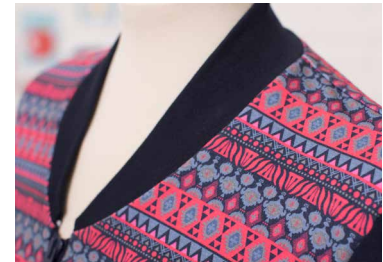
ALL OVERLOCKERS AT A GLANCE



BERNINA *made to create*

TABLE OF CONTENTS

Stitches	page 3
Touch Screen Comfort	page 6
Stitch Selection and Settings	page 7
Threading Comfort	page 8
Sewing Comfort	page 9
Ease of Operation	page 10
Standard Accessories	page 11



OVERLOCKING, COVERSTITCHING AND COMBOSTITCHING ALL MODEL COMPARISON CHART

Model	L 890	L 860	L 850	L 460	L 450
STITCHES					
Stitches A variety of wide and narrow, long and short stitches for all your sewing projects.	27	18	18	16	16
4-Thread Overlock with Integrated Safety Seam The 4-Thread Overlock is a sturdy and strong stitch, most often used for durable and elastic seams in knits and stretchy fabrics. It is suitable for apparel, especially for sportswear, and home textiles.	✓	✓	✓	✓	✓
3-Thread Super Stretch Stitch The 3-Thread Super Stretch Stitch creates overlock seams for super stretchy and two-way-stretch fabrics used for gymnastic or swimwear. An especially soft stitch, ideal for lingerie and gymnastic wear, is achieved by using a texturized nylon thread in the looper (and needles). Decorative threads are used to neaten and create reversible edges.	✓	✓	✓	✓	✓
3-Thread Overlock Wide (LN) The 3-Thread Overlock is a balanced seam and also ideal for neatening edges, hems and facings, quick-sewn edge finishing and effect seams. Wide 3-Thread Overlock is suitable for strong woven fabrics, pile, furry materials or sturdy knits, for garments and decorative projects.	✓	✓	✓	✓	✓
3-Thread Overlock Narrow (RN) The 3-Thread Overlock is a balanced seam and also ideal for neatening edges, hems and facings, quick-sewn edge finishing and effect seams. Narrow 3-Thread Overlock is suitable for fine to medium weight fabric neatening, t-shirts, children's garments, lingerie and fine home textiles.	✓	✓	✓	✓	✓
3-Thread Flatlock Wide (LN) The 3-Thread Flatlock is a flat, slightly stretchy seam that is sewn on the right side of the fabric and is especially ideal for creative overlock projects in combination with decorative threads. The wrong side of the stitch is known as "ladder stitch" and also used for decorations or base to weave tape or cord into the stitch. A wide 3-Thread Flatlock is used in medium to heavy weight fabrics. Suitable for patchwork, apparel and sportswear and home textiles.	✓	✓	✓	✓	✓
3-Thread Flatlock Narrow (RN) The 3-Thread Flatlock is a flat, slightly stretchy seam that is sewn on the right side of the fabric and is especially ideal for creative overlock projects in combination with decorative threads. The wrong side of the stitch is known as "ladder stitch" and also used for decorations or as a base to weave tape or cord into the stitch. A narrow 3-Thread Flatlock is used in medium to light weight fabrics. Suitable for patchwork, apparel, sportswear, lingerie and home textiles.	✓	✓	✓	✓	✓
3-Thread Narrow Seam The 3-Thread Narrow Seam is used for fine fabrics or see-through materials like silk, cotton or synthetic fabrics. It can be used for pintucks in heirloom projects and as a decorative fine edge finish, e.g. with two different shades of embroidery thread in the loopers. Suitable for inserting lace, light weight apparel, blouses, children's garments, accessories.	✓	✓	✓	✓	✓
3-Thread Rolled Hem A rolled hem is an attractive and quickly sewn decorative edge finish, for example with embroidery thread in the loopers. The rolled hem can also be used for pintucks in heirloom projects. Suitable for accessories, ruffles, light weight outerwear, home textiles.	✓	✓	✓	✓	✓
3-Thread Picotstitch The 3-Thread Picotstitch is an attractive and quickly sewn edge for light weight woven and knitted fabrics. Suitable for scarfs, bridal wear and ruffles, home textiles and decorative craft projects.	✓	✓	✓	✓	✓

Model	L 890	L 860	L 850	L 460	L 450
2-Thread Wrapped Overlock Wide (LN) The 2-Thread Wrapped Overlock is a reversible stitch, ideal for neatening single layers of fabric, seams, hems and facings or as a decorative element with woven or fleecy fabrics or firm knits. The wide stitch is suitable for medium weight to heavy weight fabrics and threads.	✓	✓	✓	✓	✓
2-Thread Wrapped Overlock Narrow (RN) The 2-Thread Wrapped Overlock is a reversible stitch, ideal for neatening single layers of fabric, seams, hems and facings or as a decorative element with woven or fleecy fabrics or firm knits. The narrow stitch is suitable for medium weight to light weight fabrics and medium weight to finer threads.	✓	✓	✓	✓	✓
2-Thread Flatlock Wide (LN) The 2-Thread Flatlock is a highly stretchy and flat stitch, often used with decorative threads or texturized nylon thread for lingerie, swimwear and gymnastic wear. The wide stitch is suitable for medium to heavy weight woven and knitted fabrics, patchwork, apparel and craft projects.	✓	✓	✓	✓	✓
2-Thread Flatlock Narrow (RN) The 2-Thread Flatlock is a highly stretchy and flat stitch, often used with decorative threads or texturized nylon thread for lingerie, swimwear and gymnastic wear. The narrow stitch is suitable for medium to light weight woven and knitted fabrics, patchwork, apparel and craft projects.	✓	✓	✓	✓	✓
2-Thread Rolled Hem With rolled hems, achieve fine edge finishing on hems, ruffles and flounces, ideal for bridal wear, or lingerie. With Differential Feed, stretching, it is often used as lettuce edge finish in knits.	✓	✓	✓	✓	✓
2-Thread Overlock Wide (LN) The 2-Thread Overlock is ideal for neatening fine single layers of fabric and ensures no seam puckering. The wide stitch is suitable also for heavier weight but loosely woven fabric neatening with texturized nylon or universal thread, use for apparel or home textiles.	✓	✓	✓	✓	✓
2-Thread Overlock Narrow (RN) The 2-Thread Overlock is ideal for neatening fine single layers of fabric and ensures no seam puckering. The narrow stitch is ideal for finest silk and batiste or knitted fabrics to be neatened with fine texturized nylon or fine threads, for apparel or home textiles.	✓	✓	✓	✓	✓
2-Thread Blanketstitch Wide (LN) The 2-Thread Blanketstitch is used on ready-made blankets or on heavier fabrics with longer stitch and maybe more cutting width and with decorative threads in needle and looper. Suitable for medium to heavy weight fabrics and knits, pile and furry material, decorative finishing on apparel, coats, jackets and home textiles.	✓	✓	✓	-	-
2-Thread Blanketstitch Narrow (RN) The 2-Thread Blanketstitch is used on ready-made blankets or on heavier fabrics with longer stitch and maybe more cutting width and with decorative threads in needle and looper. Suitable for medium weight and soft fabrics and knits, pile and furry material, decorative finishing on apparel, coats, jackets and home textiles.	✓	✓	✓	-	-
4-Thread Coverstitch 4-Thread Coverstitch is a durable and flat stitch for hems and also ideal for top-stitching or flat joining seams, for example with elastic or elastic lace. The 4-Thread Coverstitch can be used for decorative seams or hems when combined with decorative thread in needles or looper, right or wrong side showing. Suitable for sweaters, t-shirts, sportswear, swimwear, lingerie, apparel or decorative projects and home textiles.	✓	-	-	-	-
3-Thread Coverstitch Wide (LC-RC) Perfect flat hem for all stretchy fabrics, ideal for topstitching, finishing with elastic, binding edges or for decorative seams within fabric. Ideal for apparel from stretchy fabrics, i.e. sportswear, swimwear, lingerie, sweaters and t-shirts, apparel, but also for embellishing textiles. Suitable for medium to heavy weight fabric.	✓	-	-	-	-
3-Thread Coverstitch Narrow (LC-CC) Durable and flat stitch for hems, ideal for flat joining seams and topstitching, bindings or hems, right or wrong side up with decorative threads. Suitable for garments such as t-shirts, sportswear, swimwear, lingerie and children's garments. The narrow stitch is ideal for medium to light weight fabrics.	✓	-	-	-	-
3-Thread Coverstitch Narrow (CC-RC) Durable and flat stitch for hems, ideal for flat joining seams and topstitching, bindings or hems, right or wrong side up with decorative threads. Suitable for garments such as t-shirts, sportswear, swimwear, lingerie and children's garments. The narrow stitch is ideal for medium to light weight fabrics.	✓	-	-	-	-

Model	L 890	L 860	L 850	L 460	L 450
2-Thread Chainstitch (RC) The 2-Thread Chainstitch is a durable seam with limited elasticity. It is ideal to stabilize seams, for topstitching and binding. It can be easily undone when used for temporary basting. Suitable for medium to heavy weight woven and knitted fabrics, such as denim, corduroy and toweling, for apparel and home textiles. Use decorative threads in the looper to achieve decorative hemming and topstitching along an edge or within the project piece.	✓	-	-	-	-
3-Thread Overlock (LN) + 2-Thread Chainstitch (RC) This low-stretch stitch is used to sew the seam and neaten the edge at once. It is durable and often used on denim or corduroy, loosely woven fabrics, as well as for stabilizing seams in loose knits. Often seen in home textiles, garments and projects with loosely woven or knitted fabrics and where a wider seam allowance is required to avoid easy fraying. Use a wide stitch for medium to heavy weight material.	✓	-	-	-	-
3-Thread Overlock (RN) + 2-Thread Chainstitch (RC) This low-stretch stitch is used to sew the seam and neaten the edge at once. It is durable and often used on denim or corduroy, loosely woven fabrics, as well as for stabilizing seams in loose knits. Often seen in home textiles, garments and projects with loosely woven or knitted fabrics and where a wider seam allowance is required to avoid easy fraying. Use a narrow stitch for medium to light weight material.	✓	-	-	-	-
2-Thread Overlock (LN) + 2-Thread Chainstitch (RC) The low-stretch Chainstitch with 2-Thread Overlock can be used for sewing and neatening the edge at once. It is suitable for garments, craft projects and home textiles with loosely woven or knitted fabrics where a wider seam allowance is wanted to avoid easy fraying. Use a wide stitch for medium to heavy weight material.	✓	-	-	-	-
2-Thread Overlock (RN) + 2-Thread Chainstitch (RC) The low-stretch Chainstitch with 2-Thread Overlock can be used for sewing and neatening the edge at once. It is suitable for garments, craft projects and home textiles with loosely woven or knitted fabrics where a wider seam allowance is wanted to avoid easy fraying. Use a narrow stitch for medium to light-weight material.	✓	-	-	-	-
Overlock Stitch Width The Overlock Stitch Width is adjustable to suit any fabric type and sewing technique. Wide stitches are suitable to sew and neaten medium to heavy weight fabrics, narrower stitches for medium to light weight and fine fabrics.	3–9 mm	3–9 mm	3–9 mm	3–9 mm	3–9 mm
Coverstitch Width Wide coverstitch is suitable for hems in medium to heavy weight knitwear, for high stretch fabrics and for topstitching. Narrow coverstitch is ideal for topstitching fine knitwear and light weight fabrics.	3/6 mm	-	-	-	-
Combo Stitch Width The different 4- and 5-Thread Combo Stitches, wide or narrow, are ideal to neaten loosely woven or knit fabrics that require a wider seam allowance or to combine different quality fabrics.	7–11 mm	-	-	-	-

Model	L 890	L 860	L 850	L 460	L 450
-------	-------	-------	-------	-------	-------

TOUCH SCREEN COMFORT					
<p>Centrally Located Color Touch Screen The Color Touch Screen with LED backlight is at eye level, making it easy to view selected stitches, changes made to stitches and the help animations. The soft keys below the color screen give access to frequently used functions anytime. The centrally located color touch screen is easy to use with fingertip or Touch Screen Pen and offers touch-scroll selection.</p>	4.3"	4.3"	-	-	-
<p>Home Screen The Home Screen allows access to the User Modes, Setup Program, Tutorial, Creative Consultant and Eco Mode.</p>	✓	✓	-	-	-
<p>Guided Mode Guided Mode leads the user step-by-step through stitch selection, manual settings for the stitch up to saving in personal memory.</p>	✓	✓	-	-	-
<p>Expert Mode The Expert Mode allows fast operation including direct access to the simplified display for quick access to manual settings.</p>	✓	✓	-	-	-
<p>Stitch Selection The desired stitch can be selected by number or directly from the stitch list. Choose how the stitch information is displayed, multicolor or monochrome, list view with stitch icon and name or icon view with stitch number.</p>	✓	✓	-	-	-
<p>Personal Memory Save stitch settings for the fabric and/or thread combination or project for future use. Save your favorite or individually adjusted stitches permanently under a personalized name. Saved stitches can be selected to be sewn, edited or deleted. Up to 100 stitches can be held in the Personal Memory.</p>	✓	✓	-	-	-
<p>Temporary Altered Stitch Memory With Temporary Altered Stitch Memory, individually adjusted thread tensions, stitch lengths and Differential Feed are remembered during the sewing session, until the machine is switched off or the settings are saved in the Personal Memory. This saves time when repeating stitches in a project.</p>	✓	✓	-	-	-
<p>Manual Settings In the Manual Settings Tab, the recommended default settings for the chosen stitch are clearly displayed for fast and simple setup. Animations are also available to show how to adjust the particular settings.</p>	✓	✓	-	-	-
<p>Sewing Screen The Sewing Screen Tab displays the selected stitch and the programmed or amended settings. The Stitch View can be changed from multicolor to monochrome and special stitches such as the flatlock are also shown in flat view. "Stitch Optimizer" and "Sewing Speed Adjustment" are selectable from this screen.</p>	✓	✓	-	-	-
<p>Setup Program The Setup Program gives access to information about the machine and software version. It allows you to personalize the screen colors of the Expert and Guided Mode, change the sounds or turn them off, turn the light off or on, and change maximum and minimum sewing speed.</p>	✓	✓	-	-	-
<p>"?"-Help When "?" Help is activated, information on the selected screen area is called up and displayed.</p>	✓	✓	-	-	-
<p>Tutorials Access on-screen tutorials for information on sewing techniques and machine operation. Find information about various aspects of sewing, such as stitch selection, threading, thread tension, needles, presser feet, sewing settings, maintenance and more.</p>	✓	✓	-	-	-
<p>Creative Consultant All information on-screen. Choose the fabric and technique to be sewn, and the Creative Consultant will give you stitch suggestion, thread, needle and Presser Foot recommendations.</p>	✓	✓	-	-	-
<p>Stitch Optimizer Find the visual of how your stitch currently looks, then follow the steps on how to optimize the stitch by adjusting the relevant thread tension, stitch length, Differential Feed, cutting width, Micro Thread Control (mtc), Rolled Hem, etc.</p>	✓	✓	-	-	-

Model	L 890	L 860	L 850	L 460	L 450
Presser Foot Indicator Indicator shows recommended Presser Foot for general use of stitch selected. In addition, optional feet useful for the selected stitch are listed.	✓	✓	-	-	-
eco Mode If work is interrupted for a longer period of time, the machine can be switched to power saving mode. The eco Mode also serves as a child safety feature. The screen will be locked and the machine cannot be started.	✓	✓	-	-	-

STITCH SELECTION AND SETTINGS					
Stitch Selection with Automatic Default Settings With Stitch Selection, thread tensions, stitch length and Differential Feed are automatically set for the selected stitch. These defaults work for most thread/fabric combinations. If necessary, all stitch attributes can be fine-tuned, not only the thread tensions individually, stitch length and differential feed, but also the manual settings such as Cutting Width, Micro Thread Control (mtc), Presser Foot Pressure, Rolled Hem Lever. For each thread/fabric combination, the defaults can be adjusted to personal preferences.	✓	✓	-	-	-
Stitch Selection with Stitch Chart Select a stitch from the stitch chart, set the machine accordingly before threading accordingly.	-	-	✓	✓	✓
Total Stitch Control Individually adjustable settings such as Thread Tension for each Needle and Loper, Stitch Length, Differential Feed, Cutting Width, Micro Thread Control, Presser Foot Pressure, and Rolled Hem settings allow for perfecting stitches when using a wide variety of fabrics and thread combinations.	✓	✓	✓	✓	✓
Auto Default Thread Tension Setting and Digital Adjustment Thread tension defaults are automatically set for the selected stitch. For each stitch the involved tensions are set at a default based on universal overlock thread, suitable for a wide variety of fabrics. Thread tension fine tuning is possible via the Touch Screen or buttons next to the threading path at front of the machine.	✓	✓	-	-	-
Thread Tension Adjustment Infinitely variable and easily adjustable, the Thread Tension Dials ensure quick and accurate set-up for all projects.	-	-	✓	✓	✓
Auto Default Stitch Length Setting and Digital Adjustment Stitch Length Default is automatically set for each selected stitch and is set at a default based on universal overlock thread, suitable for a wide variety of fabrics. Stitch Length adjustment is possible via the Touch Screen and can be adjusted even while sewing. Set or adjust to accommodate all sewing projects. The stitch with personal settings can be saved in the Personal Program and is easily retrievable.	0.8–4.5 mm	0.8–4.5 mm	-	-	-
Stitch Length Adjustment With a variable, easily accessible, numbered dial on the exterior of the machine, stitch length can be adjusted, even while sewing.	-	-	0.8–4.5 mm	0.8–4 mm	0.8–4 mm
Stitch Length Fine Adjustment for Rolled Hem The Stitch Length Adjustment between 0.8 and 1.5 is very fine, so that rolled hems can be fine-tuned in delicate fabrics for the perfect match of fabric and thread.	-	-	✓	✓	✓
Auto Default Differential Feed Setting and Digital Adjustment Differential Feed Default for each selected stitch is automatically set. Differential Feed Setting adjustments can be made from 0.7 to 2.0. Differential Feed ensures wave-free seams in knits and prevents puckering in fine fabrics, while allowing deliberate gathering as an option.	✓	✓	-	-	-
Differential Feed Adjustment Differential Feed ensures wave-free seams in knits and prevents puckering in fine fabrics, while allowing deliberate gathering as an option. With an easily accessible dial outside right, adjustments to the fabric feed can be made even while sewing.	-	-	✓	✓	✓
Cutting Width The Cutting Width Dial on the front of the machine can be adjusted to accurately set up seam width, and is adjustable even while sewing.	✓	✓	✓	✓	✓

Model	L 890	L 860	L 850	L 460	L 450
Micro Thread Control (mtc) With Micro Thread Control, the over-edge thread length can be set directly resulting in the perfect seam with one quick adjustment.	✓	✓	✓	✓	✓
Rolled Hem Selection Lever The Rolled Hem Selection Lever is built in next to the Stitch Plate and eases switching to a Rolled Hem stitch and back to overlock by simply moving the Rolled Hem Selection Lever.	✓	✓	✓	✓	✓
Stitch Finger Adjustable The Stitch Finger supports the looper threads to build the stitch. It moves with the cutting width adjustment to hold more or less thread and can be fine-tuned using Micro Thread Control.	✓	✓	✓	✓	✓

THREADING COMFORT					
One-Step BERNINA Air Threader (for looper threads) Automatically threads the loopers. The One-step BERNINA Air Threader is activated with the BERNINA Foot Control, so both hands remain free to hold the thread over the Air Threader Nozzles.	✓	✓	✓	-	-
Lower Looper Threader Lever The Lower Looper Threader Lever helps in the quick threading of the lower looper.	-	-	-	✓	✓
Pulse Drive (L 890) When stepping on the BERNINA Foot Control with the Threader Cover and/or Looper Cover open, the machine will sew slowly for a maximum of one stitch, until the machine is in threading position. If converting from overlock to coverstitch or vice versa, the upper looper arm is set at the defined position, given the dial is set accordingly.	✓	-	-	-	-
Pulse Drive (L 850/L 860) When stepping on the BERNINA Foot Control with the Threader Cover and/or Looper Cover open, the machine will sew slowly for a maximum of one stitch, until the machine is in threading position.	-	✓	✓	-	-
Handwheel Position Indicator The ideal threading position for the needles and the loopers is indicated with a marking located under the Looper Cover.	-	-	-	✓	✓
Thread Feed Into Air Threader Nozzle With closed BERNINA Air Threader pipes, the thread is pulled into the Air Threader as soon as the foot control is pressed. The thread tail needs only to hover above the nozzle to be pulled into the Air Threading System and into loopers. No need to place thread tail into nozzle for threading to occur properly.	✓	✓	✓	-	-
Color-coded One-path Threading The thread follows one defined path for each stitch. The threading paths are always the same, and color coded.	✓	✓	✓	✓	✓
Can be used with any sequence of threads Thread in any order because the Looper Threads are in closed pipes that avoid unintentional tangling of needle and Looper Threads.	✓	✓	✓	-	-
Threading Chart A Color-coded Threading Chart is located inside the looper or threader cover. The threading path of each thread can be verified.	✓	✓	✓	✓	✓
Stitch View Stitch View graphics throughout the Touch Screen functions. The view of a stitch can be changed from multicolor to monochrome and special stitches such as the Flatlock can be shown in flat view. This serves as reference for stitch identification, threading and tension fine tuning. Stitch View graphics are found in the tabs of the touch screen.	✓	✓	-	-	-
Stitch Diagram The Stitch Diagram is ideally printed next to the Thread Tension Dial and eases verifying thread tension and threading path.	-	-	✓	✓	✓
Built-in Needle Threader The Built-in Needle Threader located at the needle bar area easily switches to thread the needles.	-	✓	✓	-	-

Model	L 890	L 860	L 850	L 460	L 450
Needle Checking Window This window on the Needle Bar provides for clear viewing of proper installation of needles.	✓	✓	✓	✓	✓
Needle Screws Securing Plate The Securing Plate ensures that unused screws will not get lost.	-	✓	✓	-	-
Thread Tension Release As soon as the Presser Foot is lifted, the thread tension discs release automatically and allow easy, tension-free threading.	✓	✓	✓	✓	✓
Swing-out Presser Foot with Auto Swing Back The Presser Foot swings to the left, providing ample space for easy threading, comfortable needle changing and to easily lay the threads under the Presser Foot. When lowering the presser foot with the hand lifter it swings automatically back.	✓	✓	✓	-	-
Air Threader Circumvention The advantage of bypassing part of the air pipes is to reduce friction, thus tension and a good sewing result can be achieved for longer and wider stitches.	✓	✓	✓	-	-

SEWING COMFORT					
Freearm Freearm for easy sewing of tubular projects such as cuffs, legs and necklines.	✓	✓	✓	-	-
BERNINA Free Hand System (FHS) with Knee Lifter Use the knee-operated lever to lower or temporarily raise the Presser Foot allowing your hands to manage your project at all times.	✓	✓	✓	✓	-
Grand Sewing Space More space to the right of the needles offers comfort and more flexibility when stitching large and small projects. Ideal for handling from the right when the left hand is holding fabric and notions in place.	✓	✓	✓	-	-
Space to the Right of the Needle More space to the right of the needles offers comfort and more flexibility when stitching large and small projects. Ideal for handling from the right when the left hand is holding fabric and notions in place.	143 mm	143 mm	143 mm	50 mm	50 mm
LED Sewing Light LED Sewing Light illuminates the sewing and looper area making it easier to thread the needles and loopers. Eye strain is reduced while stitching projects in a brightly lit area.	✓	✓	✓	✓	✓
Sewing Light On/Off The Sewing Light can be switched on/off via the Touch Screen in the Setup Menu. By default the sewing light is on.	✓	✓	-	-	-
DC Motor The DC Motor provides consistent needle penetration at any speed, from sewing fine single layer to heavy multi-layer fabrics. In particular, it also allows for slow, precise sewing.	✓	✓	✓	✓	-
AC Motor The AC Motor power offers sewing quality for all types of sewists from the crafter to the discerning stitcher.	-	-	-	-	✓
Maximum Sewing Speed (stitches per minute) Reliable sewing performance, for precise stitching at any speed.	1350 spm	1500 spm	1500 spm	1500 spm	1200 spm
Minimum Sewing Speed (stitches per minute) Reliable sewing performance, for precise stitching at any speed.	250 spm	250 spm	400 spm	-	-
Stitch-by-Stitch Sewing The DC Motor provides consistent needle penetration at any speed, from sewing fine single layer to heavy multi-layer fabrics. In particular, it also allows for slow, precise sewing.	✓	✓	✓	✓	-
Automatic Needle Stop Up The needle always stops in the highest position at the end of each stitch. Ideal to thread the needles, position or remove the sewing project.	✓	✓	✓	✓	-

Model	L 890	L 860	L 850	L 460	L 450
Needle Stop Up/Down Programmable Needle Stop Up/Down, programmable via Touch Screen. For each sewing project, program the suitable stop, either to stabilize the project under the foot or to easily remove it.	✓	✓	-	-	-
BERNINA Foot Control Use the BERNINA Foot Control for accurate stitch-by-stitch precision and the benefit of needle up/down using the Foot Control with Back-kick function.	✓	✓	✓	✓	-
Electronic Foot Control/Power Cord The Electronic Foot Control provides consistent needle penetration at any speed from slow to full, success is achieved with both intricate and quick paced projects.	-	-	-	-	✓
2-step Presser Foot Lifter The 2-Step Presser Foot Lifter provides additional clearance under the foot when placing multiple layers or bulky fabrics.	✓	✓	✓	✓	✓
Presser Foot Pressure Adjustment Presser Foot Pressure is adjustable to accommodate sheer to thick fabrics for optimum feed of all sewing projects.	6 Steps	6 Steps	6 Steps	5 Steps	5 Steps
Thread Cutter The Thread Cutter with clamp function is conveniently positioned on the outside of the machine. It cuts thread chains and loose threads neatly. It holds the thread chain out of the way ready to start the next seam.	✓	✓	✓	✓	✓
Integrated Upper Looper Converter Easily set up for applications without upper looper thread with the built-in Upper Looper Converter. To engage, flip to the left and insert into the looper eye. To disengage, push out of looper eye and flip to the right until it clicks into lowest position.	✓	✓	✓	-	-
Upper Looper Converter Attach the included Upper Looper Converter, stored conveniently in the Looper Cover Door, to convert to stitches without upper looper thread.	-	-	-	✓	✓
Accessories in Threader Cover Most important and frequently used tools are always at hand, ready to be used, no searching or wasting time.	✓	✓	✓	-	-
Accessories in Looper Cover Most important and frequently used tools are always at hand, ready to be used, no searching or wasting time.	-	-	-	✓	✓
Needle Pad Needles that are not in use can be stored in the Needle Pad under the Threader Cover, always within easy reach.	✓	✓	✓	✓	✓
Easy to Engage and Disengage Knife from Outside The Knife On/Off Lever is positioned on the outside of the machine. The upper knife is quickly disengaged with one finger when opting not to trim. It is also easily accessible while sewing.	✓	✓	✓	-	-
Knife On/Off The Upper Knife is quickly released with the turn of a knob inside the machine, lowering the knife when opting not to trim fabric, or engaged when needed for trimming.	-	-	-	✓	✓

EASE OF OPERATION					
Sewing Speed Programmable Via the Touch Screen, the maximum and minimum speed can be adjusted to suit any sewing skill and project requirement.	✓	✓	-	-	-
Speed Selection Switch Sewing top speed can be reduced via the Speed Selection Switch to accommodate sewing projects that require slower but even sewing speed.	-	-	✓	-	-
Safety Switch for Needle Threader Safety Switch to cut electrical supply to motor when Needle Threader is active.	-	✓	✓	-	-

Model	L 890	L 860	L 850	L 460	L 450
Presser Foot Safety Switch Safety Switch to cut electrical supply to motor when Presser Foot is lifted so the machine will not sew. Also when temporarily raising the Presser Foot with the Knee Lifter, the machine will not sew.	✓	✓	✓	✓	-
Safety Feature for Presser Foot Monitoring On/Off By default, the machine will not sew with Presser Foot raised. Via the Touch Screen, in the Setup Menu, the Safety Switch for the raised Presser Foot can be deactivated.	✓	✓	-	-	-
Safety Indicator (LED) An open Looper Cover, open Sewing Table or raised Presser Foot activate the Safety Switch and Indicator (LED), thus preventing the accidental operation of the overlocker during the threading process.	-	-	-	✓	-
Safety Switch for Open Cover, Pulse Drive Safety Switch to reduce sewing speed and activate Pulse Drive when Threader or Looper Cover is open. The machine sews slowly until it reaches the correct position for threading.	✓	✓	✓	-	-
Safety Switch for Open Cover An open Looper Cover activates the Safety Switch thus preventing the accidental operation or sewing, for example during the threading process.	-	-	-	✓	-
Carry Handle and Recessed Grip Fold-down Carry Handle on top to the left of the threading path with additional Recessed Grip at lower right for stable carrying of the machine, even while threaded.	✓	✓	✓	-	-
Carry Handle The Carry Handle allows easy transport or movement of the machine.	-	-	-	✓	✓
Upper Looper On/Off Upper Looper On/Off for coverstitch sewing. Simply press and move the lever into the corresponding position and turn the handwheel to bring the upper looper arm in the required position, to quickly switch between overlock and coverstitch sewing.	✓	-	-	-	-
Coverstitch Insert with Seam Markings Coverstitch Insert with seam markings for sewing Cover-/Chainstitch at a precise distance from the edge along a guide marking. Ideal for precise seams and hems along narrow or wide edges.	✓	-	-	-	-
Knife Cover Insert The Knife Cover Insert is used with all overlock stitches with upper and lower looper, allowing to cut, sew and neaten. It guides the fabric trimmings smoothly into the Cut-offs Bin, while protecting your fingers in the knife area.	✓	✓	✓	✓	✓

STANDARD ACCESSORIES					
Overlock Foot Overlock Foot with needle position marks and cord/tape guide, suitable for all materials, threads and projects.	-	✓	✓	✓	✓
Overlock/Combostitch Foot Presser Foot with needle position marks, suitable for all Overlock and Combostitches, ideal for all fabrics, threads and projects.	✓	-	-	-	-
Cover/Chainstitch Foot Presser Foot designated for Cover- and Chainstitches, for best feeding when sewing hems, seams or topstitching with decorative threads.	✓	-	-	-	-
Freearm Cover Widens the work space to a flat area and the gap behind the stitch plate is closed for simpler guiding of flat lying projects.	✓	✓	-	-	-
Slide-on Table The Slide-on Table attaches and detaches easily. It provides a larger work space, thus easier guiding of fabric, especially of larger sewing projects, handling of slippery fabrics and bulky items.	✓	✓	✓	✓	-
Cut-offs Bin Holds cut-off seam allowances and thread snips and keeps the working area clean.	✓	✓	✓	✓	✓

Model	L 890	L 860	L 850	L 460	L 450
Knee Lifter (FHS) Use the knee-operated lever to lower or temporarily raise the Presser Foot allowing your hands to manage, position or align your project at all times.	✓	✓	✓	✓	-
Seam Guide Easy to attach on the Knife Cover, the Seam Guide allows a regular cut-off of excess seam allowance.	✓	✓	✓	-	-
Seam Guide Easy to attach over the Stitch Plate, the Seam Guide allows a regular cut-off of excess seam allowance.	-	-	-	✓	✓
BERNINA Tweezers Tweezers of good quality and grip with a thin tip for threading or placing fabrics and notions.	✓	✓	✓	✓	✓
Needle Threader/Inserter The Needle Threader/Inserter Tool is a companion accessory that is stored in the Threader Cover. It aids in successful needle threading and needle installation and removal.	✓	✓	✓	-	-
Needle Threader/Inserter The Needle Threader/Inserter Tool is a companion accessory that is stored in the Looper Cover. It aids in successful needle threading and needle installation and removal.	-	-	-	✓	✓
Needle Set Be equipped with the needles in the most common used sizes, 80/12 and 90/14	✓	✓	✓	✓	✓
Lint Brush The Lint Brush eases cleaning in the knife area, near needles and loopers and under the Stitch Plate as well as between the feed dog rows of teeth.	✓	✓	✓	✓	✓
Screwdriver Hex Screwdriver to loosen or tighten the fixing screws on the needle bar. The screwdriver is conveniently stored in the Threader Cover.	✓	✓	✓	✓	✓
Screwdriver Torx Screwdriver to loosen/tighten the stitch plate screws, for convenient removing of the Stitch Plate when cleaning the feed dog or the area around the freearm, because a well maintained machine runs smoother and gives more joy.	✓	✓	✓	-	-
Screwdriver Screwdriver to loosen/tighten the stitch plate screws, for convenient removing of the Stitch Plate when cleaning the feed dog, because a well maintained machine runs smoother and gives more joy.	-	-	-	✓	✓
Threading Wire Allows threading in case the pipes would be blocked or the Air Threader is not operating. It should only be used temporarily and briefly to allow finishing a project before the machine is serviced by an authorized dealer.	✓	✓	✓	-	-
Touch Screen Pen Touch Screen Pen to navigate on the Touch Screen and precisely activate on-screen icons. Magnetic Holder on side of machine for easy access.	✓	✓	-	-	-
CS Lock Tool The CS Lock Tool's material and shape are designed to be used to gently pull the needle threads between presser foot and fabric, before they are cut manually and the stitch is secured.	✓	✓	-	-	-
Accessories Box Box for tools and accessories such as screw driver, spool caps, thread nets, etc.	✓	✓	✓	✓	✓
Extension Box Box to store supplied accessories as well as optional accessories.	✓	✓	-	-	-
Spool Stabilizers Preventing spool vibration and irregular thread feed, thus resulting in regular stitching at any sewing speed.	✓	✓	✓	✓	✓
Spool Caps When sewing with smaller spools or when thread unwinds irregularly, use the Spool Caps for an optimal sewing result with different kinds of thread qualities and spools.	✓	✓	✓	✓	✓

Model	L 890	L 860	L 850	L 460	L 450
Spool Nets For sewing with easy raveling threads, metallic yarns or loose fine thread that falls easily from a vertical spool, use Spool Nets to control uneven unwinding thread, allowing an optimal sewing result with different kinds of thread qualities and spools.	✓	✓	✓	✓	✓
Overlocker Oil For a quiet and smooth running, long lasting machine and more joy when sewing.	✓	✓	✓	✓	✓
Spare Knife The Upper Knife can be replaced in case the cutting performance deteriorates. In case of damage, both knives need to be replaced by an authorized dealer	–	–	–	✓	✓
Dust Cover Soft cover, prevents dust from accumulating over your machine in case it is not used for a longer period.	✓	✓	✓	✓	✓

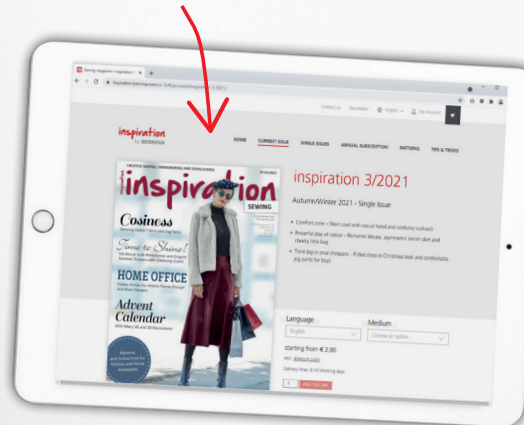


GET "INSPIRATION" ONLINE!

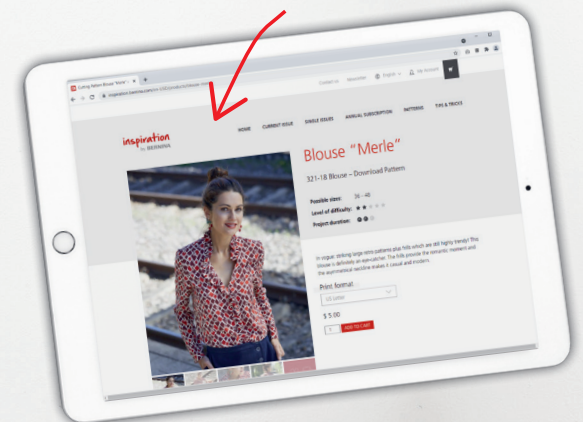
Find all sorts of great sewing ideas at inspiration.bernina.com!

There, you can find great patterns and instructions for women's and children's fashion as well as accessories and home decorations to download. The magazine is now also available as an e-magazine! Visit us and sign up for the newsletter to make sure you don't miss anything !

Issues available as an e-magazine



Individual patterns



LOOKING FOR
A NEW SEWING
PROJECT?
inspiration.bernina.com

